

4ALL

DRAINAGE CHANNELS FOR D.I.Y. MARKET

3 METER DRAINAGE
LINE BY YOURSELF!
GARAGE PACK

MUFLE[®]
WATER CONVEYING SYSTEMS

THE 4ALL IS EQUIPPED WITH:



GARAGE PACK

CODE 613001:

- 3 "4all" channels 100/70 +
- 3 "4 all" A15 gratings +
- Kit 1 bottom outlet + 2 end caps



INSIDE THE PACKAGING:



N.3 CHANNELS 100/70 HD-PE

+



N.3 A15 GRATINGS IN
GALVANISED STEEL

+

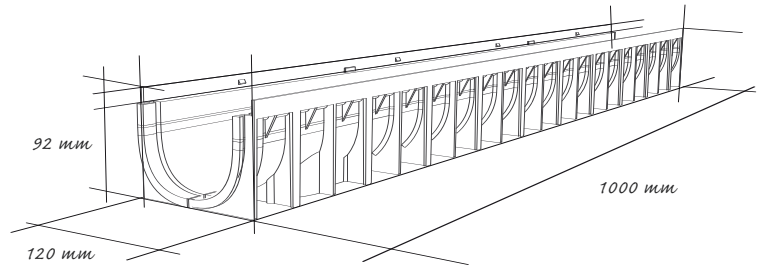


N.1 KIT BOTTOM OUTLET +
2 END CAPS *

* Available in two versions \varnothing 110 mm or \varnothing 75 mm.

MUFLE®

FEATURES

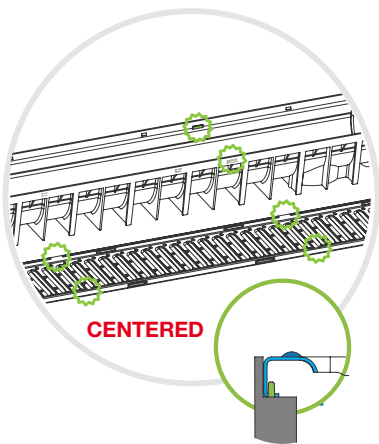


NEW SOLUTION FOR COLLECTING AND DRAINING THE SURFACE WATER!

FEATURES:

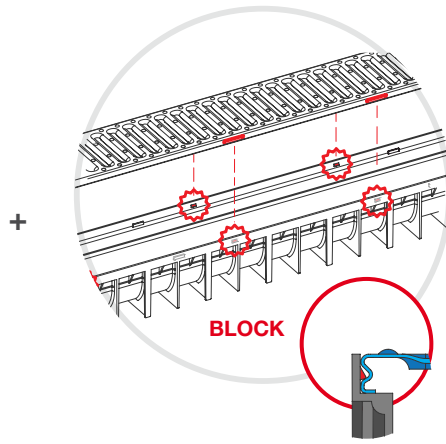
- Click the grating in and out, no screws required.
- Designed in accordance with EN 1433.
- Easy to assemble.
- The smooth waterproof surface allows a quick waterflow drainage.
- The external structure with ribs improves the anchoring between concrete and HDPE and is designed for a better strength and rigidity of the channel.
- High mechanical and chemical resistance.
- Lightweight.
- Easy to carry.

FIXING SYSTEM



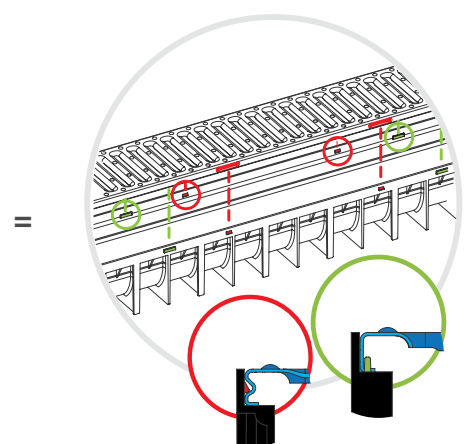
**CHANNEL PROTRUSION
FOR FIXING**

The gratings are well-fixed to the channels thanks to the protrusions in the channels themselves without using external elements like screws or nuts.



**PIVOTS FOR CENTERING
THE GRATINGS**

Once the grating has been centered and fixed, the correct grating position on the channel has been guaranteed by pivots that allow, once the grating has been centered and fixed, to adjust any eventual imperfection in the channel dimension due to external agents.



PROTRUSION DETAILS

INSTALLATION INSTRUCTIONS

A. LAY OUT OF DRAINING LINE

A1. Establish the exact lay out that the draining line will have to follow.

A2. Work out the trench sizes, taking into consideration:

- the channel sizes (width x height);
- the thickness for the concrete bed on which the channel will lay (please pay attention to the calculation considering also the eventual height for the space of the bottom outlet, when it is required).

e.g. For the installation of the 4ALL channel with A15 class grating, the trench should be 192 mm high (92 mm for the channel height + 100 mm for the concrete laying bed) and 320 mm wide (120 mm for the channel width + 200 mm for the side flankings).

N.B. In order to obtain a good concrete, it is advisable to mix three parts of sand, one of cement and half a part of water (water/ cement ratio=0,5); in this way the concrete will be rather "fluid". In order to enable the concrete to reach the less accessible areas, it is advisable to use combined gravel with a maximum diameter of 15 mm.

B. OUTLET OPENING

To drain the water, you can use the bottom outlet, that is made of 2 halves.

B1. Break the outlet in the special seat with a hammer.

B2. Fit in the two halves and insert the outlet in the channel fixing it with the four screws supplied.



C. THE CHANNEL POSITIONING

C1. Proceed with the concrete cast for creating the laying bed and wait that the concrete has reached the right consistency (one hour at least).

C2. If the draining line requires more than one channel, connect the channels by the coupling system "male- female"

C3. Lay the channel on the laying bed.

C4. Link up the drainage pipes to the sewerage.

C5. Level out the channels and the final covering.

N.B. The channels inside the packaging are equipped with the gratings already fixed through a special system of protrusions in the channel itself. The special coupling system "male-female" allows the channels connection without disassembling the gratings.



D. FLANKING

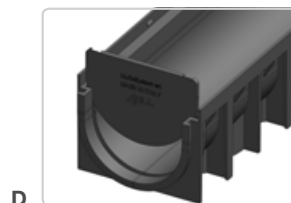
Before doing the flanking:

D1. Insert the end caps.

D2. Create the flanking.

N.B. Be careful to leave enough space without flanking, when a final covering (tiles, blockpaving, etc...) is necessary.

D3. The area will be practicable not before 72 hours.



E. CHANNEL CLEANING/INSPECTION

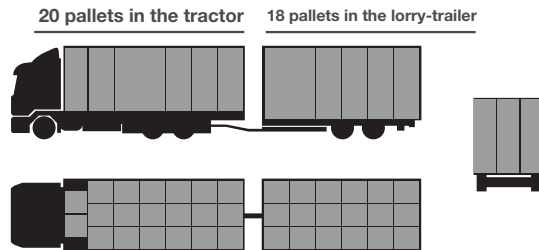
E1. Take the grating off with lifting it up till the grating will be released.

E2. Clean the channel.

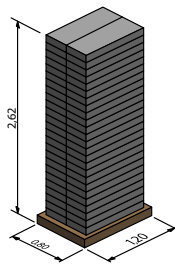
E3. Apply the grating on the channel fitting the protrusions of the channel into the slots along the grating; then make a little pressure with the hands until the grating has been fixed to the channel.



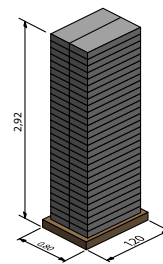
PCS PER PALLET FOR LORRY WITH TRAILER



PALLETS PER TRACTOR

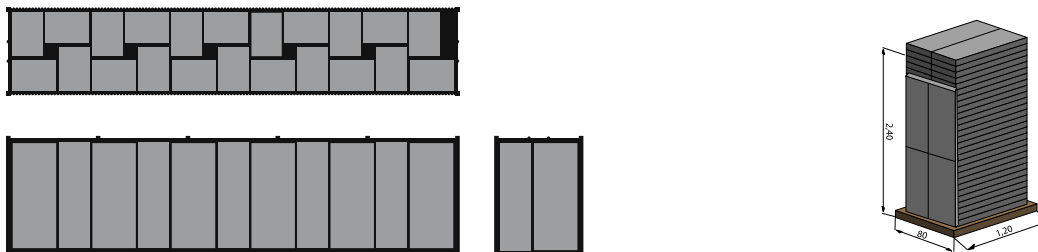


PALLETS PER TRAILER



HIGH CUBE	Garage per column	Nr. Column	Total box	Channels for box	Total channels
Fore part	50	20	1000	3	3000
Rear part	56	18	1008	3	3024
			2008		6024

PALLETS PER HIGH CUBE CONTAINER



HIGH CUBE	Garage per column	Nr. Column	Total box	Channels for box	Total channels
Container HC	52	22	1144	3	3432

PRODUCT CERTIFICATION

MufleSystem obtained the company certification in compliance with ISO 9001:2000 by the third part IGQ (Institute of Quality Guarantee) for the following activities: "production and commercial distribution of drainage systems marked by MUFLE".

This means that all the company processes as the resources management, the product realization, the definition of responsibilities, the analyses and improvements of the aforementioned processes are managed in a systematic and organic way and are especially aimed at increasing the customers' satisfaction and guaranting the quality standards of the manufactured goods.

The drainage HD-PE channels, the gratings and covers in galvanised steel (or stainless) and ductile iron made by MufleSystem srl are certificated in conformity with the EN 1433 Norm "drainage channels for pedestrian and vehicular areas".

The certification ensures the consumer that the quality procedures have been achieved in compliance with the specific requirements of the European directives and that all the units are submitted to periodic tests as per the EN 1433 Norm.

The CE marking identifies the certification assessment procedure and is marked on all the channels distributed on the market in compliance with the safety requirements.

Certified Company
ISO 9001:2008
CE EN-1433



MufleSystem srl

Via dell'Industria, 7
62017 Porto Recanati - MC - ITALY
Tel. +39 071 9799122 - Fax +39 071 7592275
info@mufle.com - www.mufle.com