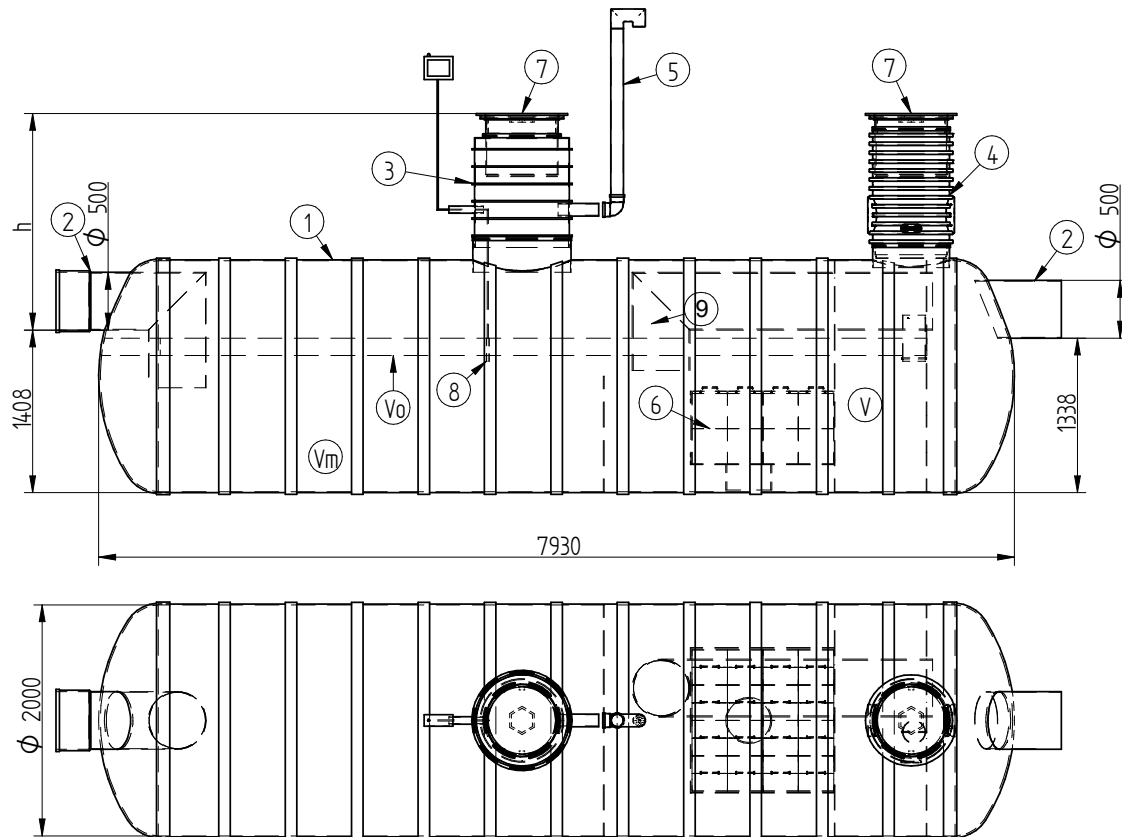


I'd like to order

I'd like a quote

Mark the installation depth of the tank h (depth from the ground to the bottom of the inlet pipe in mm)  
h =

Notes (name of project or address, special need etc):



No	NAME	MATERIAL	SIZE	Qn/pcs
1	Separators body	GRP	D2000.L7930	1
2	Inlet- outlet pipe	PE-HD	D500mm	1
3	Inspectionwell 1 (choose the right depth)	PE-HD	D800 mm	1
3	Inspectionwell 2 (choose the right depth)	PE-HD	D600mm	1
Installation depth h is measured from inlet pipe bottom to groundlevel in mm. On special occasions we can adapt the body for deeper installation)				
5	Ventilationpipe	PE	D110 mm	1
6	Oil coalescence unit HD Q-PAC			1
V	Whole volume		14 780 dm <sup>3</sup>	
V <sub>0</sub>	Oil layer volume		2035 dm <sup>3</sup>	
V <sub>m</sub>	Sand- mud volume		6500 dm <sup>3</sup>	
ADDITIONAL EQUIPEMENT (Make Your choice)				
7	Telescopic cover D600 mm			
8	Oilseparator alarmunit			
9	Bypass	PVC	D500 mm	1

Please send the completed form by e-mail

Please check your selections and measurements before sending

Date	Engin	Signature	Sheets	OILSEPARATOR I class EQ BP 65/195 with bypass
<b>eccua</b>		Mass	Number	RV